



Denti® One Piece

Denti®
system



Implant System

we want
to be
your
partner!

cost effective products /
excellent service

Hungarian know-how /
German precision



THE DENTI SYSTEM LTD.

The Denti System Ltd. was founded in 1989 and specialises in producing and selling dental implants. Our primary objective is to satisfy the expectations of patients by giving them an improved quality of life.

SMILE FOR EVERYONE

The company profile has always been to provide the Hungarian dental community with innovative, high quality and cost effective products. Since 2005 Denti® implants and instruments have been made in Germany by **Hager&Meisinger GmbH**.

QUALITY and TRADITION

The Denti® Implant System is based on 30 years of implant dentistry experience of a team created under the guidance of **Dr. István Vajdovich M.D.Ph.D.** The progress of the company has been achieved through continuous development and technical know-how.

RESEARCH and DEVELOPMENT of Denti® Implant System. Denti's research is focused on implants and implant devices. Experimental and clinical studies within the field of implantology have been conducted.

EDUCATION

Education is a significant part of our company policy. Professional seminars have been held since 1990 by highly distinguished Professors of Hungarian Universities.

SERVICE

Our competent sales representatives can give individual advice. Dentists and engineers are at the users' disposal in cases of special questions or problems. We aim to build relationships.



we want
to be
your
partner!

EXPERIENCE and MODERNITY

The 20 years' experience with two-stage cylindrical implants and 10 years' experience with cylindrical one-stage implant designs are combined in a new implant type:

Denti® One Piece.

The implant body and the integral fixed abutment are machined as one piece.

This new implant has been developed for day-by-day practitioners who intend to use a supplementary implant system in their daily praxis.

cost effective products /
excellent service

Hungarian know-how /
German precision

NEW WAY OF THINKING

One-stage surgery offers a wide range of advantages for both patients and practitioners.



Advantages for the practitioner:

- short chairtime
- insertion is simple, quick and safe
- immediate function (one stage surgery)
- aesthetic restoration can be achieved right after the surgical procedure
- proven maximum initial stability in bone immediately after insertion
- minimize bone loss
- no second surgery, saving time and improving soft tissue apposition



Advantages for the patient:

- cost effective
- no second surgery saving time
- implant insertion is quick therefore operation takes less time
- insertion method reduces healing and waiting time for the preparation of the denture



Smile for everyone!

smile
for
everyone!



indications and contra-indications



INDICATIONS

- to support fixed single tooth restorations
- to support fixed partial denture restorations
- can be used as additional implants holding temporary prosthesis during osseointegration of permanent implants inserted



CONTRA-INDICATIONS

- poor bone quality
- soft bone quality (class D4)
- less than 8 mm vertical distance between the antagonist occlusal surface and the bone of the toothless surface
- significant extent of bone deficiency

One piece implants are not recommended for using together with augmentation material





user-friendly
surgical
kit!

instruments

The Denti® One Piece Surgical Kit is designed for a quick and rational insertion.

Parallelism

- The Denti® One Piece Surgical Tray contains an **Alignment kit**. The use of the alignment kit ensures
- the achievement of the equal distances (70 mm, 90 mm, 12 mm)
- identical axial degree of the implants

The drills are:

- made from surgical stainless steel
- color coded for quick identification
- laser marked for marking depths and diameters
- autoclavable
- available in a complete kit or as individual items
- for external irrigation

The tray:

- is clearly labelled and color coded
- makes the organisation of all drills and instruments clear and simple



Smile for everyone!

root form
design!

implants



The Denti® One Piece implant is the optimal solution for replacing

- a single tooth
- several teeth (bridges)

Place

- in the maxilla
- in the mandible

Loading

- may be loaded right after insertion
- may be loaded after a conventional healing period (immediate or late implantation)

Surgery

- can be implanted in a transgingival process
- can be implanted with exposure (raising the muco-periosteal flap)

Implant placement is possible:

- flapless implant placement
- immediately after extraction
- Implant placement with flap reflection

Self tapping

Surface

Denti® One Piece implant has the same proven surface as the other Denti® implants with an excellent long term success of 98,7 %.

The Denti® implants surface is the combination of a physical and mechanical surface treatments (sandblasting and chemical treatment.)

This micro-roughened, passivated surface design with its high surface energies is the guarantees rapid and safe formation and permanent adherence of the bone tissue on the surface of the Denti® implants.

Size options

The Denti® One Piece implants are available in 3 diameters and 3 lengths with two head types



DIAMETERS	3,8mm	4,3 mm	4,8 mm
	9 mm	9 mm	9 mm
LENGTHS	11 mm	11 mm	11 mm
	13 mm	13 mm	13 mm

Threads and shape

The Denti® One Piece implant has a completely new thread design. The bone condensing thread cutters and new thread design make a proper compression in the implant bed leading high primary stability.

Root form with conical head

The implant is available with 2 head types. Both are conical but different in height

- with standard head part suggested for molar region
- with high head part suggested for front region (also increased cemented surface)

Packaging

The implants are packaged gamma-ray sterilised. Prosthetic components and instrumentation require autoclave sterilisation before use.



The implant head has conical shape allowing a small degree of axial correction (9°).

In case of major axial differences the correction of the head part must be carried out in the mouth by preparation. Special burs are recommended to prepare the abutment part of Denti® One Piece implant.

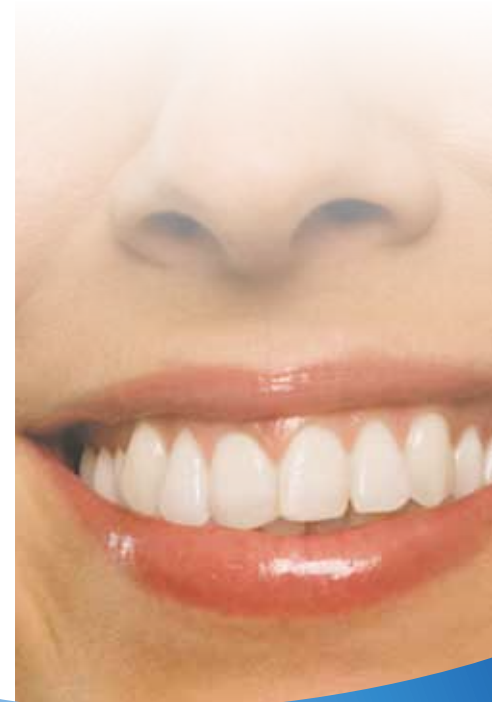
The preparation of the abutment is the same procedure as for natural tooth.

- direct impression coping is possible in case of head part preparation
- closed tray impression taking is possible with the help of the impression taking caps if no preparation is carried out

Impression caps and posts

- easy to use
- allow precise impression taking
- color code and laser marked

safe
primary
stability!





ISO, CE, WARRANTY

EN ISO 9002 and ISO 13485.
The Denti® products are CE marked.
All Denti® products undergo strict testing by the
Quality Department.

The Denti System Ltd.
commits itself to a 10 year period warranty
after purchase to substitute its implants.

The procedure for
replacement is detailed
in the Product Catalogue.